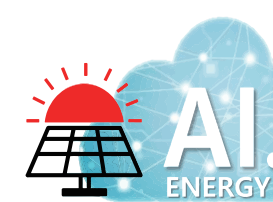


Supported by Korean government



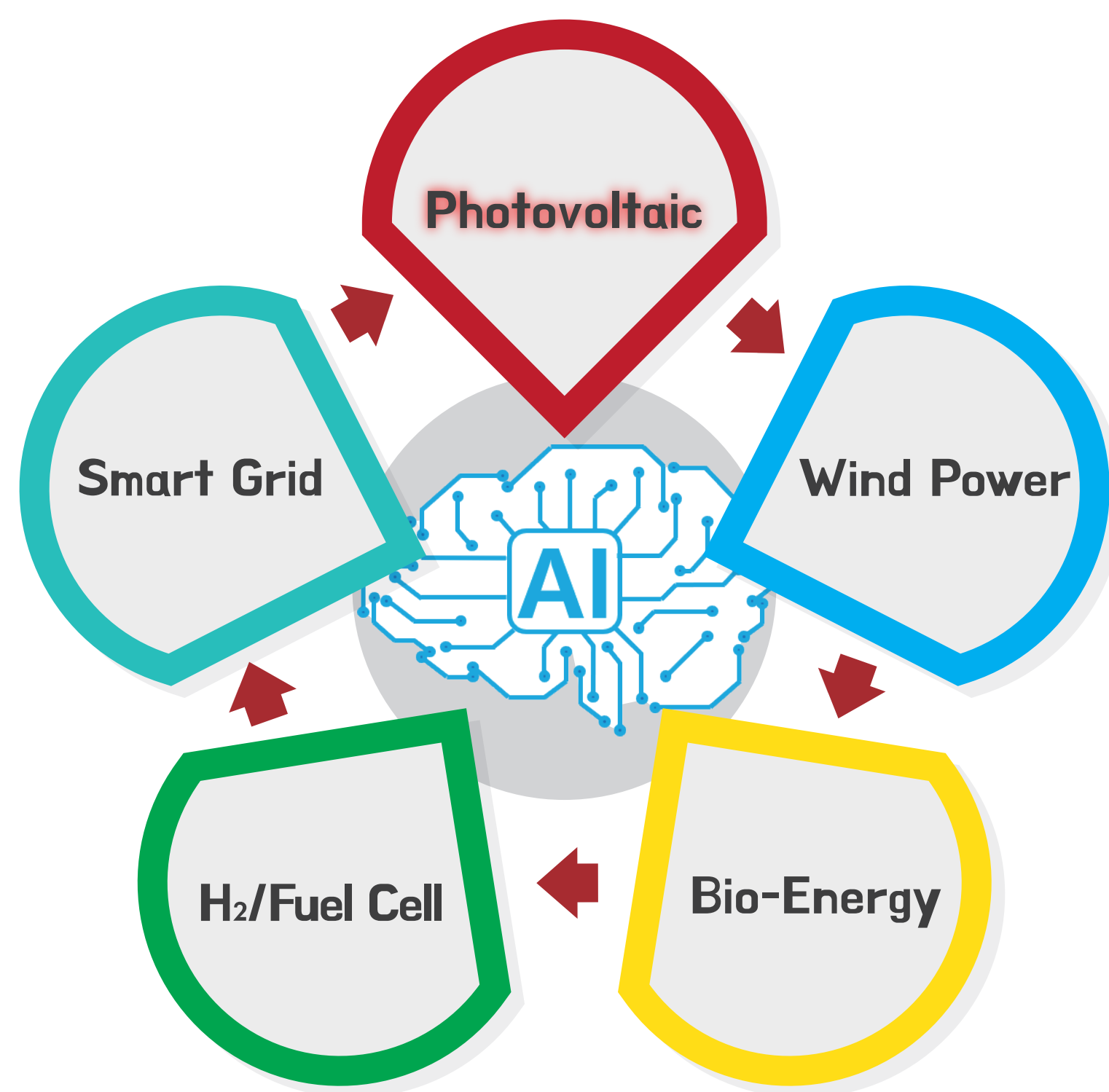
Graduate School of
Integrated **Energy-AI**



Recruitment for Fall Semester, 2020

Solar Energy Engineering (2020) ▶ (2021)

Graduate School of Integrated **Energy-AI**



Admission Review, Fall
2020.06.29(Mon) - 07.03(Fri)

Courses of Degree

- Master program
- Ph.D. program
- Master & Ph.D. program

Contents of Course

- Artificial Intelligence(AI) theory & application
- Deep Learning
- Machine Learning
- Solar cells
- Next generation Solar cell materials & devices
- AI-based solar power plant design
- AI-based smart grid

Scholarship system

- Full scholarship support:
Master's program 1,200,000 W,
Ph.D. program 1,800,000 W (per month)
- Additional support for project labor costs when participation in research projects.
- Personal laptops are provided for education and research

Administration Office

- H** <http://sg.chonbuk.ac.kr/Grad/>
- T** (+82)-63-270-2431
- A** JBNU College of Engineering, Building No.6, Room No. 118
- P** Prof. Seung Beop Lee
- E** e-mail: seungbeop.lee@jbnu.ac.kr

Summer special lecture

2020.07.20(Mon) - 08.14(Fri)

- Programming for Artificial Intelligence(AI)
- Statistics for Big Data

